

# CERTIFICATE OF LOCATION OF GOVERNMENT CORNER

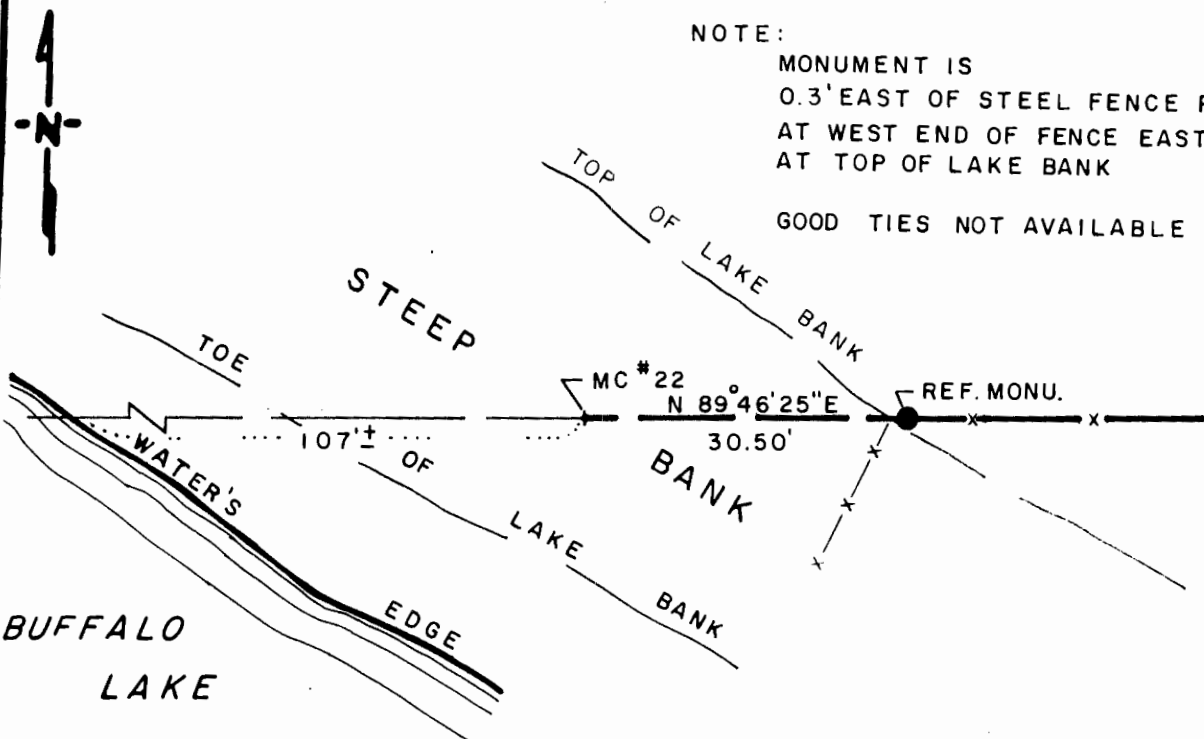
# 22 MEANDER Corner of Section 18, Township 107 N, Range 39 W, 5<sup>th</sup> P.M.

STATE OF MINNESOTA, County of MURRAY

At the corner location shown on the sketch

- On \_\_\_\_\_ found a \_\_\_\_\_
- left monument as found,  lowered monument,  removed monument (explain)
- On 10-9-91 placed a 3/4" x 24" REBAR WITH ALUMINUM CAP STAMPED  
DATE "DNR SURVEY MARKER", FLUSH, FOR REF. MONUMENT

## SKETCH OF REFERENCE TIES



NOTE:  
 MONUMENT IS  
 0.3' EAST OF STEEL FENCE POST  
 AT WEST END OF FENCE EAST  
 AT TOP OF LAKE BANK  
 GOOD TIES NOT AVAILABLE

1983 MURRAY COUNTY COORDINATE SYSTEM	
MEANDER COR. #22 N = 184,623.961 E = 550,063.249	REF. MONUMENT N = 184,624.082 E = 550,093.748

BEARING IS IN COUNTY ORIENTATION

Statement of evidence relative to this corner location is on back of page

J.B.M. 11-25-91  
WMA 00065.00.00.01

I hereby certify that this document and the data contained herein was prepared by me or under my direct supervision.

Bruce W. Shipped 12-2-91  
DATE  
Registration No. 17003

- Land Surveyor,  Professional Engineer
- County Surveyor,  County Engineer

### OFFICE OF THE COUNTY RECORDER

County of MURRAY

I hereby certify that this document was filed in the Co. Recorder's office at \_\_\_\_\_ M. on the \_\_\_\_\_ day of \_\_\_\_\_ A.D., 19\_\_\_\_

County Recorder James V. Johnson

By DEC 4 1991, Deputy

DOCUMENT NO. \_\_\_\_\_

Meander Corner Number 22 of Section 18, Township 107 North, Range 39 West

The DNR Bureau of Engineering contacted the following for survey information:

Minnesota Secretary of State's Office  
Murray County Recorder's Office  
Murray County Highway Engineer's Office

- 1861 U.S. General Land Office notes obtained from the Secretary of State's Office show the corner marked with a wood post with the following bearing trees marked:  
4" Willow, South  $82-3/4^{\circ}$  East, 23 links (15.18 feet)  
24" Poplar, North  $48-1/2^{\circ}$  West, 105 links (69.30 feet)
- 1907 Surveyor's Record Book A, page 205, obtained from the County Recorder's Office contains a survey by J. W. Woolstencraft. Survey shows a lake in the northwest quarter of Section 18 but does not show corner.
- 1991 October, DNR Bureau of Engineering found an east-west fence line which ends at the top of lake bank in area of corner. Searched for but found no evidence of the GLO bearing trees. Computed a position for corner as follows:  
on the westerly projection of the east-west fence  
proportionally per GLO distances from the north quarter corner of Section 18 to the northeast corner of Section 13  
The computed position was found to be:  
on a steep lake bank  
120 ft. easterly of the water's edge  
813.13 ft. (806.52' GLO) from the north quarter corner of Section 18  
1702.12 ft. (1688.28' GLO) from the northeast corner of Section 13

Analysis of the above information led the DNR Bureau of Engineering to conclude that the computed position for corner marks its location. Set a reference monument to corner as shown on the sketch of reference ties.